

Enterprise 3

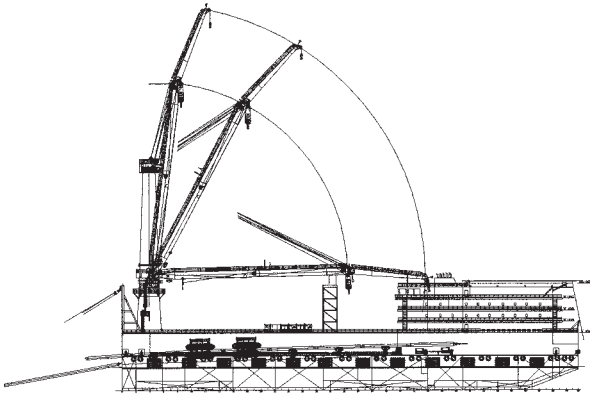
Derrick Lay Barge



Enterprise 3 or E3 is an ABS Class A1 Derrick Lay Barge specially designed for installation of offshore structures and pipelines. Equipped with 800 metric tons crane. The vessel is capable of laying pipe size ranging from 6" to 36" outside diameter (OD).

Specifications

- Length 120.0 m
- Breadth 31.7 m
- Depth 9.0 m
- 800 metric tons crane
- Total deck space 1200 m²
- Mooring Winch 8 x 100 MT capacity
- 300 men accommodation



Principle Dimensions

Classification	ABS Class A1 Barge
Call Sign	9MIC7
Official No	333895
Year Built	2008
Length Overall	120.0m
Breadth Moulded	31.7m
Depth Moulded	9.0m
Draft Designed	6.0m
Port of Registry	Port Kelang
GRT/ NRT	16872/ 5061
Main Deck Strength	12.5 ton/ m ²
Total Designated Deck Space	1200 m ²

Accommodation

8 x 1 Berth Cabins	8 men
14 x 2 Berth Cabins	28 men
66 x 4 Berth Cabins	264 men
Total	300 men
Recreation Rooms	2 ea (for clients & crew)
Galley	150 men seating
Office/ Conference Rooms	10 ea

Pipelay Capabilities

Pipe Size	6" to 36" OD
Tension Capacity	136 ton (2 nos. x 68T each)
A & R Tension Capacity	136 ton
Welding Station	4 nos.
NDT Station	2 nos.
Field Joint Station	1 no.
Davits	6 nos. x 50 MT
Type of Stinger	Truss Type (non-floating)

Main/ Derrick Crane (Mast Crane)

Main Hook Capacity-Fixed Mode	800MT @ max. rad. 27m
Main Hook Capacity-Revolving	70MT
Whip Hook Capacity	120MT @ rad. 36.5m
Boom Length to Main Hook	51.00m
Boom Length to Whip Hook	71.00m

Crawler Crane

250T	1 no.
Crane Boom Length	150ft

Mooring System

Mooring Winch (hydraulic)	8 nos. 100MT capacity
Mooring Anchors	8 nos. x 12MT each Delta Flipper
Mooring Wire	2" Dia. x 1500m

Machineries

Main Generators	7 x 590kW @ 60Hz
Emergency Diesel Generator	1 x 99kW @ 60Hz
Aux. Diesel Generator for Crane	72kW, 480V 60Hz 3 Phase
Add Deck Generators	3 x 1800kW @ 60Hz
Air Compressors	2 x 500cfm @ 10 bar
	1 x 750cfm @ 10 bar
	2 x 250cfm @ 10 bar
Fresh Water Maker (RO)	2 units x 80 m ³ /day
Oil Water Separator	1 unit, 3 m ³ /hr 15ppm
Sewage Treatment Plant	2 units, DVZ-SKA-150 bio for 300 men

Tank Capacities

SWB/ FW Tank (non-portable)	WSB-15712.9 m ³ / FW-220 m ³
FW Tank (Portable)	1826 m ³ approx.
F.O. Tank	1978 m ³ approx.
Dirty Oil Tank	52.6 m ³ approx.
Hydraulic Oil Tank	10 m ³ approx.
Lube Oil Tank	10 m ³ approx.

Pumps

Ballast Pump	500 m ³ /hr, 30m Head
FO Transfer Pump	45 m ³ /hr, 45m Head
FW Hydrophor Set	30 m ³ / hr, 35m Head, 2000L tank
SW Hydrophor Set	30 m ³ / hr, 35m Head, 2000L tank
Spare Pump for Hydrophor Set	30 m ³ /hr, 35m Head
Hot Water Circulation Pump	30 m ³ /hr, 35m Head
Fresh Water Transfer Pump	120 m ³ /hr, 35m Head
Sewage Discharge Pump	14 m ³ /hr, 30m Head
Dirty Oil Pump	3 m ³ /hr, 30m Head
Bilge Pump	30 m ³ /hr, 25m Head
Fire & GS Pump	130 m ³ /hr, 80m Head
Emergency Fire Pump	65 m ³ /hr, 60m Head
Helideck Monitors	1000 gpm, 89m Head

Safety Equipment

Life Rafts	18 x 25 men (STBD & PORT)
Life Jackets	600 units (200% coverage)
Life Buoys	8 nos.
Rescue Boat	Vanguard 25hp, 6 men

Radio Communications Equipment

VHF Radio Base Set	7 Sets Model Motorola
Telephone	Available
Radar Transponder (SART)	2 nos. Model - SAILOR & MCMURDO
Two-Way Handheld VHF Radios	18 nos. Motorola & ICOM
EPIRB	1 no. - MCMURDO
Radar	2 nos. - FURUNO
Inmarsat Mini-C	1 no. - SAILOR
Inmarsat Mini-M	1 no. - SAILOR
SSB Transceiver	1 no. - FURUNO
Weather Facsimile	1 no. - TAIYO
Internet	Available
Walkie Talkie	18 nos. Walkie Talkie with clip on microphone

Helicopter Navigation System

Helideck Capable of Handling	S92 Sikorsky Helicopter
VHF AM Transceiver	1 no. Model A200, 1 no. Non-Directional
Radio Beacon	SA 100
Aviation Portable Radio Sets	2 nos. A24, Complete with microphone set for Helicopter landing officers
Helideck Size	W 22M x L 22M

* This vessel specification is given in good faith and assumed to be accurate at the time of print.

** Owners will not be liable for errors, omissions or misprints published. Owners reserve the right to amend this specification without notification.